

	<b>2026 SNOW BIKE WORLD CHAMPIONSHIPS</b>
	<b>CHÂTEL FRANCE</b> PORTES DU SOLEIL HAUTE-SAVOIE



 **2026**

# **TECHNICAL GUIDE**

## Contents

1. INTRODUCTION.....	3
2. PROGRAM .....	3
3. RIDERS CATEGORIES.....	3
4. COMPETITORS SELECTION .....	3
5. PARTICIPATION QUOTA PER NATION .....	3
6. RIDER’S REGISTRATION PROCEDURE .....	4
6.1 ONLINE RIDER’S REGISTRATION.....	4
6.2 RIDERS CONFIRMATION AT THE EVENT.....	4
7. ACCREDITATION DELEGATION MEMBERS (INCLUDING RIDERS) .....	5
7.1 ACCREDITATION REQUEST .....	5
8. START ORDER – START PROCEDURES .....	5
8.1 START ORDER.....	5
9. TEAM MANAGERS’ MEETING.....	5
10. RULES .....	5
11. EQUIPMENT .....	10
12. OFFICIAL CEREMONIES.....	12
13. PRIZE MONEY .....	12
14. OFFICIALS .....	12
15. USEFUL ADDRESSES .....	13
16. VENUE MAP.....	13
17. COURSES MAP.....	15

## 1. INTRODUCTION

This document summarises the information needed by the national federations concerning the participation of their riders at the 2026 UCI Snow Bike World Championships.

Mainly intended for team managers, this document focuses on the purely sporting aspects of the 2026 UCI Snow Bike World Championships. If you have any questions concerning this document, please do not hesitate to contact the UCI.

## 2. PROGRAM\*

Friday 6 February	13:30 – 15:30	Riders' confirmation
	13:30 – 15:30	Bike Checks
	17:00	Team Managers' meeting
Saturday 7 February	08:30 – 09:15	Super G Course Inspection
	10:00	Super G Women
	Followed by	Super G Men
	15:30 – 16:30	Dual Slalom Course Inspection
	17:00	Dual Slalom

*\*The program is subject to changes depending on the entries and the weather conditions.*

## 3. RIDERS CATEGORIES

According to the articles 4.1.002 to 4.1.006 and 4.7.002 competitions are open to competitors born in:

SNO EVENTS	YEAR OF BIRTH
Elite (Men & Women)	2009 and older (aged 17 and older)

## 4. COMPETITORS SELECTION

9.2.031	Categories for which the title of UCI World Champion will be awarded are as follows:
SNO	Men Elite (aged 17 and over); Women Elite (aged 17 and over);

## 5. PARTICIPATION QUOTA PER NATION

The participation quota per nation is 15 riders per gender.

The registration is valid for both Super G and Dual Slalom, meaning that each rider must compete in both events. **The Super G event is used as qualification race for the Dual Slalom.**

## 6. RIDER'S REGISTRATION PROCEDURE

### 6.1 ONLINE RIDER'S REGISTRATION

When?

The system will open on the:	Thursday 22 January 2026, 12:00 CET
The system will close on the:	Wednesday 28 January 2026, 12:00 CET
Entries lists will be published on:	Thursday 29 January 2026, 14:00 CET

How?

Through the UCI website clicking as follows:

- The online **UCI DataRide** platform for registering riders can be accessed [here](#).
- User and Password: User access requested through the form.
- New user: Please complete the request [here](#)
- Riders' accommodation must be entered at the time of the online registration.

### 6.2 RIDERS CONFIRMATION AT THE EVENT

When?

Friday 6 February from 13h30 to 15h30

Where?

Chapiteau at the bottom of the Linga chairlift

What?

All national federations must show up at the time of the riders' confirmation to ensure the participation of their riders. The accreditation pick-up for a rider cannot be considered as a confirmation of his participation.

Remarks

- A rider declared unfit as a result of a nonconforming blood test may not be replaced.
- Injury or illness will not be accepted as a valid circumstance unless the rider is declared unfit to start by the official UCI doctor.
- At the time of the riders' confirmation, team managers must present their national outfit to the commissaires.
- Race numbers are distributed during the riders confirmation process. Riders' licences and passports must be submitted to the commissaires panel.
- Race number distribution for Dual Slalom (bibs 1-32) will take place on Saturday 7 February from 15h00 to 16h00 at the chapiteau at the bottom of the Linga chairlift.
- 1.3.076 A rider shall ensure that their identification number is visible and legible at all times. The identification number shall be well fixed and may not be folded or altered.
- All riders must attend a Bike Check by the UCI-Commissaire during the rider's confirmation (see Chapter 11)

## **7. ACCREDITATION DELEGATION MEMBERS (INCLUDING RIDERS)**

### **7.1 ACCREDITATION REQUEST**

For whom?

The UCI has decided to grant the responsibility of the accreditations to the local organising committee. All the requests must be directed to them directly.

## **8. START ORDER – START PROCEDURES**

### **8.1 START ORDER**

Start Order:

Super G

1. UCI Snow Bike Super G World Champion
2. UCI Snow Bike Dual Slalom World Champion
3. As per the 2025 UCI Snow Bike Super G World Championships results
4. By drawing lot

Dual Slalom

1. As per the 2026 UCI Snow Bike Super G World Championships results, top 32 riders

If less than 32 riders in the Qualification, all riders are qualified for the Elimination Heats, except if DNS in the Qualification.

## **9. TEAM MANAGERS' MEETING**

The team managers' meeting will take place on Friday 6 February at 17h00 at the Chapiteau at the bottom of the Linga chairlift.

## **10. RULES**

General

To protect the tracks, riding bikes on the race course is only permitted during the race. Outside of the race, the track may only be used outside of the marked race course. Riders who violate this rule will be disqualified. The organiser may arrange for the riders to ride on specific sections of the race track (e.g. jumps) during the course inspection, subject to snow and weather conditions. Detailed information on the sections will be communicated during Team Manager meeting. Riding on these sections is only permitted once individually after receiving permission to start from a commissaire. After passing this section, riders must leave the race track immediately. Inspecting the race track on foot is not permitted.



*Training only allowed outside the race track!*

## **Super G**

### **Gates**

A Super G gate consists of four slalom poles and two gate panels.

The gate panels are to be approx. 75 cm wide and approx. 50 cm high. They are fastened between the poles so that the lower edge of the panel is approx. 1 m above the snow and should be capable of tearing or breaking away.

The distance between the turning poles of two successive gates must be at least 25 m.

### **The Courses**

#### **General Characteristics of the Courses**

The terrain should be undulating and hilly if possible. The competition course should normally have a width of approximately 30 m.

#### **Course Setting**

Setting a Super G the following principles should be observed:

It is recommended to set the gates to make the best use of the terrain. Only a limited number of door combinations are permitted. The distance between the successive turning poles can in this case be less than 25 m, but must be at least 15 m.

A Super-G should contain a variety of long and medium turns. Competitors should be free to choose their own line between the gates. It is not permitted to set doors only down the fall-line of the slope. At places where outside gate must be removed, in exceptional cases decided by the Commissaires' Panel, the single inner gate panel (turning gate) counts as a gate. Where the terrain allows it jumps and obstacles may be set.

## Start

Start at intervals of no less than 1 minute.

## Execution of the competition

A Super G will be carried out in one run.

## Disqualifications / Did Not Finish

Reasons for disqualification are the following:

- Not passing through a gate correctly (both wheels must pass on the same side of the gate)

If a yellow or red flag is happening, the rider must stop and will be able to do a re-run

## **Dual slalom**

The Dual slalom is a competition where two competitors race simultaneously side by side down two courses. The setting of the courses, the configuration of the ground and the preparation of the snow are to be as equal as possible.

## Technical data

Minimum vertical drop should be: 50m

Minimum direction changes should be: 15

Minimum length of the competition course should be: 160m

## Jumps

Jumps are permitted.

## Choice and Preparation of the Course

Choose a slope wide enough to permit two courses, preferably slightly concave (permitting a view of the whole course from any point). The terrain variations should be the same across the surface of the slope. The course layouts should have a similar profile.

Over the full width of the competition course, the snow should be consistently hard, similar to course preparation for Slalom, so that it is possible to offer similar race conditions on both courses. The Organiser must provide transport for the athletes back to the Start in the shortest time possible. The competition course must be entirely closed off. It is recommended to fence off reserved places intended for coaches, competitors and servicemen.

## The Courses

Each course is designated by a series of gates, each gate is composed of two snowboard slalom poles with a snowboard gate panel stretched between them and fastened in such a way to tear or break away. Poles and panels are red for the course on rider's left and blue for the course on rider's right. The same course setter sets both courses and makes sure they are equal and parallel and must ensure that the courses flow is smooth, that there is variety in the turns and that the courses have rhythm changes. After the last gate, the separation between the two courses must be marked to direct each competitor towards the middle part of their respective finish.



#### Distance between the two Courses

The distance between two corresponding gates (from turning pole to turning pole) should be no less than 6 m. The distance between the centre of the start doors should be the same as between the two courses.

#### Start

Two start doors approved by the UCI must be used. The doors must be capable of simultaneous and/or delayed opening and connected to the timing devices.

The start signal can only be given after the Jury has given permission to start.

#### Start Command

The Starter ensures that the competitors are ready by asking "Red course ready – Blue course ready - Attention" - and then activates the starting signal which opens the start doors.

If one or both start doors fail to open the start must be repeated.

#### Finish

The finish areas should be symmetrical. The finish line must be parallel to the start doors.

The finish line is split in two parts and marked. Each of these must be at least 8 m wide.

It is necessary to visually divide the finish to keep the competitors separated after the finish line.

#### Execution of a Dual Slalom

##### Qualification

All Dual Slaloms must have a qualification for all eligible competitors. The starting order for the Qualification shall be determined by UCI.

The fastest 32 competitors from the qualification will advance to the first round (round of 32) of the Elimination Heats. In case of a tie for the 32nd position, the competitor with the higher bib number qualifies.

If less than 32 riders in the Qualification, all riders are qualified for the Elimination Heats, except if DNS in the Qualification.

##### Elimination Heats

Each Elimination Heat between two competitors consists of one or two run(s). The competitors change courses for the second run (Run-rerun).

##### Formation into Heats

The competitors receive bibs numbered 1 to 32 as classified from the Qualification run (rank 1 = Bib 1) and keep them until the end of the competition.



#### Round of 32 (one run)

In the round of 32, sixteen heats of competitors are formed according to the Brackets list.

Start order: following the order of the Bracket list, from top to bottom. All heats race in succession their first run (only one run). For each pair the competitor, who is listed first or respectively on top of the pairing, will start on the red course.

The following rounds follow the Bracket list from top to bottom.

The losing 16 competitors are ranked according to the round reached, then by the classification in their heat, then by their race number. (17th – 32nd).

Competitors having a bye must start.

#### Round of sixteen (two runs)

The sixteen qualified competitors start according the Bracket list in heats from top to bottom.

The round of 16 consists of two runs, the rules of these runs are defined below in the paragraph “Penalty Time”.

Eight competitors qualify for the quarterfinals. The losing eight competitors are ranked according to the round reached, then by the classification in their heat, then by their race number. (9th – 16th).

#### Quarter-finals (two runs)

The eight qualified competitors start according to the Bracket list in heats from top to bottom.

The quarter-finals consist of two runs similarly to the round of sixteen.

The losing four competitors are ranked according to the round reached, then by the classification in their heat, then by their race number. (5th – 8th)

#### Semi-finals and Final (two runs)

The four qualified competitors start according to the Bracket list in heats from top to bottom.

#### Running order

- Round of 32 (one run)
- Round of sixteen (two runs)
- Quarter finals (two runs)
- Semi-finals (two runs)
- Women small finals run 1
- Women big finals run 1
- Men small finals run 1
- Men big final run 1
- Women small finals run 2
- Women big finals run 2
- Men small finals run 2
- Men big final run 2

#### Heats control

The panel of commissaires determines how the heats are controlled.

## Disqualifications / Did Not Finish

Reasons for disqualification are the following:

- changing from one course to another
- interfering with an opponent, accidentally or not
- Not passing through a gate correctly (both wheels must pass on the same side of the gate)
- Stepping back

## Penalty Time

The penalty time will be 0.50 sec. In all cases the time difference for the start of the second run of each pairing can never be higher than the penalty time.

The competitor who is disqualified first or does not finish in the first run of a heat will start the second run with a penalty time. If both competitors are disqualified or did not finish in the first run the competitor who completed the most gates before disqualification or did not finish is the winner of the first run.

If both competitors do not finish the second run, the result of the first run counts. If both competitors were tied after the first run, the winner of the second run or the competitor who completed the most gates in the second run will advance to the next round. If only one competitor is disqualified or does not finish in the second run of a heat the competitor is eliminated.

If both competitors are tied after the second run the competitor who wins the second run advances to the next round.

In case of a tie in both runs the competitor with the lower bib will advance to the next round.

If both competitors are tied after the second run in the Final and/or the Small Final, competitors will be ranked equally (tie). They will be ordered by descending bib number.

## 11. EQUIPMENT

National federations shall submit to the commissaires' panel of events as specified in art. 1.3.056 and 1.3.059, a sample of their national team clothing for validation. The design, colour, place and size of the advertising spaces of the validated equipment must be identical for all athletes participating to the applicable events.

Riders of the same national team must wear identical racing shorts during the same event, except for advertising space included in a lateral band 9 cm wide, which may differ from one rider to another. This means that national federations must also provide their riders with national racing shorts.

**The team managers must therefore present the national jersey and pants to the commissaires' panel at the riders confirmation.**

- 1.3.057      Advertising matter, as detailed in the "UCI jersey visual guidelines" brochure published on the UCI website, shall be used at the national federation discretion - [UCI Jerseys Visual Guidelines](#).  
Advertising matter on jersey and shorts may vary from one rider to another. The design of the jersey and shorts may vary from one category of rider to another.

Advertising on protective leggings worn for downhill mountain bike, trials and BMX events is not subject to the advertising restrictions on shorts.

Additionally, the rider's name may appear on the back of the jersey.

The above measures also apply to other items of clothing worn during competition (rain jackets, winter jackets, etc.).

#### 4.3.011 Jersey

The jersey shall be a long-sleeved shirt whose sleeves extend down to the rider's wrists. Jerseys used in downhill events should be of a type specifically designed and sold for use in BMX Racing or Mountain Bike downhill events. Jerseys designed for road cycling, skinsuits, or one-piece suits comprising the jersey and the pants/shorts are not permitted for use in downhill events. The jersey must be either close fitting around the waist or must be tucked into the pants before the start to not cause interference.

#### Pants

Long pants or short pants combined with suitable knee and shin protection are authorised. Such long or short pants should be of a type that is specifically designed and sold for use in BMX Racing or Mountain Bike downhill events. Long pants of the type described above must be of one-piece construction and made of tear-resistant material. They should cover the entire length of both legs until just above the shoe or ankle. Short pants of the type described above must be of one-piece construction and made of tear-resistant material. They should be worn together with suitable leg protection, that covers the entire knee and the entire shin until just above the ankle.

#### 4.3.012 A full-face helmet must be worn properly both when racing and when training on the course. The helmet must be fitted with a peak. Open-face helmets may not be worn.

As per the regulations in France, riders must wear the following protection:

- One-piece full-face helmet with chin strap attached
- Back protector
- Elbow protector
- Knee protector
- Full finger gloves

To reinforce safety and protection:

- Mudguard installation
- Leg protection to prevent injuries caused by the spikes

Double handlebar is prohibited.

The same bike must be used for both events.

The use of studded tyres is authorised following these conditions:

- maximum height: 6mm
- maximum one nail per knob

Bike Checks will be carried out by the UCI Commissaires on Friday February 6<sup>th</sup> from 13h30 to 15h30 at the Chapiteau during the rider's confirmation. In addition, all bikes and spare wheels with metal spikes need be presented for testing and sealing as follows:

- Bike: The bike used in the Super G event must be presented to the technical commissaire for identifying seals can be placed on the frame. Any bike presented to the start of the dual slalom will need to be the same bike as used in the super G race. There will be a random seal check to confirm this.
- All wheels / tyres to be used in races, if fitted with spikes, must be presented during riders confirmation prior to being used on course. Spikes can only have a single point per knobs and must not exceed a maximum height of 6mm from the top of the tyre part fitted to. There will be a random check of tyres at the finish of a race.

## 12. OFFICIAL CEREMONIES

The following points apply to the official ceremonies:

- 9.1.044 Within 10 minutes following the end of each speciality (unless otherwise provided and duly recorded in an official communiqué), the World Champion, as well as the second and the third placed riders shall be ready for the official ceremony that shall be conducted under the responsibility of the President of the Commissaires' Panel.
- 9.1.046 Riders shall appear in racing attire, wearing their national jerseys but bare-headed and without headband or glasses, until they leave the official ceremony enclosure.
- 9.1.050 A World Champion may not wear the jersey identifying his title and bearing the regulation advertisement of his main sponsor(s) until, at earliest, the day following that on which he received it.
- 9.1.051 Any infringement of the provisions of articles 9.1.044 to 9.1.050 above shall be punished by a fine of CHF 2,000 to CHF 10,000 minimum. A higher fine may be imposed depending on the advantage derived from the offence.

## 13. PRIZE MONEY

Prize money will be paid by the UCI to the national federation who is then responsible to transfer the money to the riders.

## 14. OFFICIALS

### UCI Commissaires panel

PCP

Assistant to the PCP

Secretary

Technical Commissaire

WEBER Matthias (SUI)

FANTINATO Bernard (FRA)

NUNINGER Thierry (FRA)

WALLS Adrian (GBR)

**Union Cycliste Internationale**

10 décembre 2025

## 15. USEFUL ADDRESSES

If you need further information about the 2026 UCI Snow Bike World Championships, please contact the following people:

### UCI

Union Cycliste Internationale  
Allée Ferdi Kübler 12  
1860 Aigle, Switzerland

Phone +41 24 468 58 11

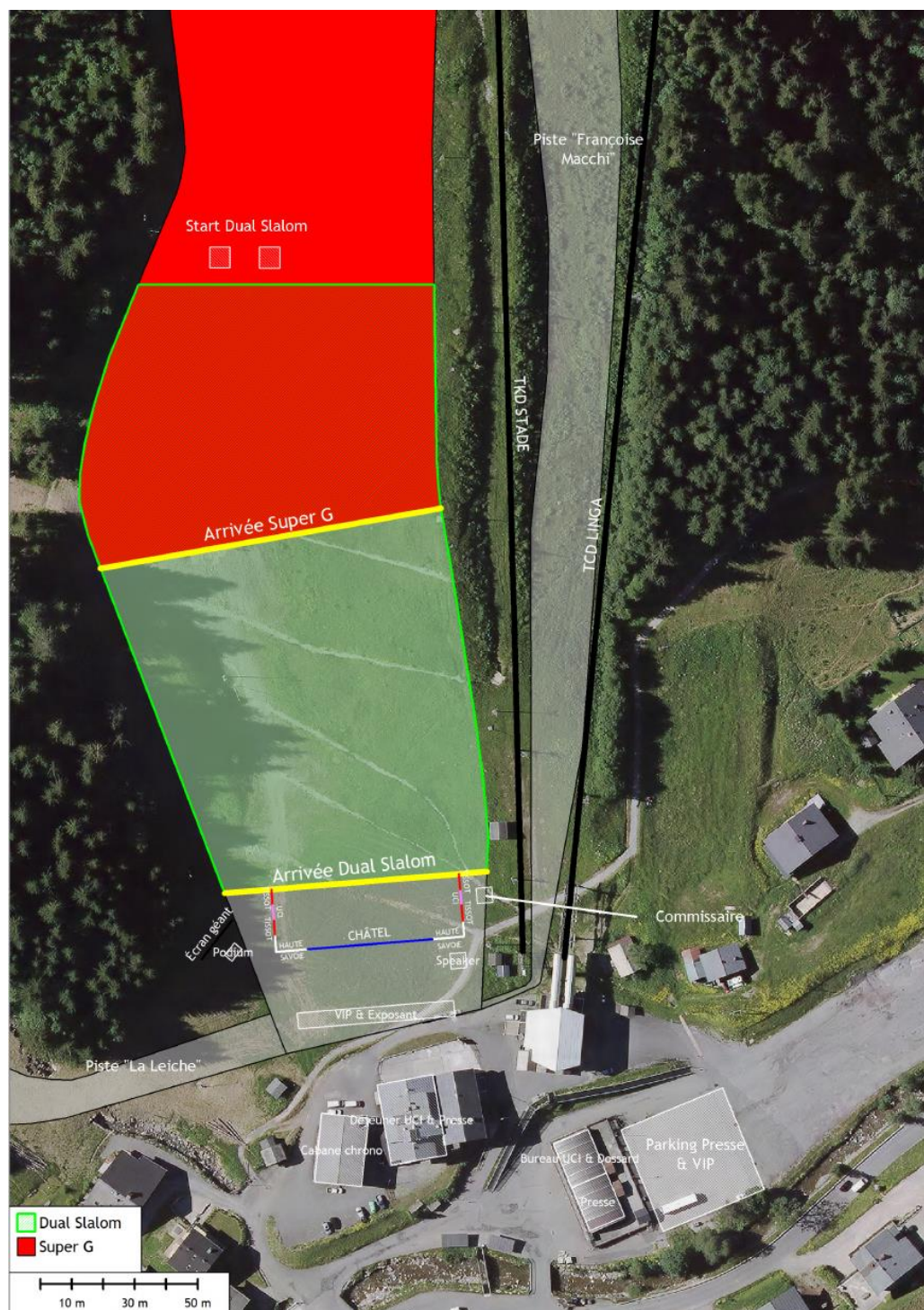
Website: [www.uci.ch/](http://www.uci.ch/)

Peter Van Den Abeele  
Directeur des Sports

Annelyse Torrent Day  
Manager Off-Road

Noémie Storbeck  
Off-Road Coordinator  
[noemie.storbeck@uci.ch](mailto:noemie.storbeck@uci.ch)

## 16. VENUE MAP





## 17. COURSES MAP

Super G: L'aity and Linga ski slopes, length 1957 meters, elevation 600 meters

Dual Slalom: Linga ski slope, length 510 meters, elevation 155 meters

